

ConvertDocs by Carmen Publishing Inc.

Introduction	1
Installing ConvertDocs	1
Using ConvertDocs	2
Important Usage Warnings	3
Updating ConvertDocs	4
Uninstalling ConvertDocs	4
Localizing the ConvertDocs Dialog Box	5
For More Information	6

Introduction

ConvertDocs is a script for Windows FrameMaker 10 and higher that converts FrameMaker documents and books to different FrameMaker formats. With ConvertDocs, you can:

- Convert documents from FrameMaker to earlier FrameMaker formats
This can be useful for exchanging documents with clients or vendors using an earlier version of FrameMaker.
- Convert documents from FrameMaker to MIF or MIF 7 formats
Translation vendors often require MIF files for their translation software.
- Convert documents from MIF to FrameMaker documents and books
Translation vendors may return localized files in MIF format that you need to convert to FrameMaker documents and books.
- “Upconvert” documents from earlier versions of FrameMaker to the current version
When you update to the latest version of FrameMaker you may want to convert your existing documents and books to the latest version all at once.

Installing ConvertDocs

ConvertDocs works with Windows FrameMaker 10 and higher. ConvertDocs DOES NOT require FrameScript.

Back up the ConvertDocs.zip file before installing the script. Navigate to the

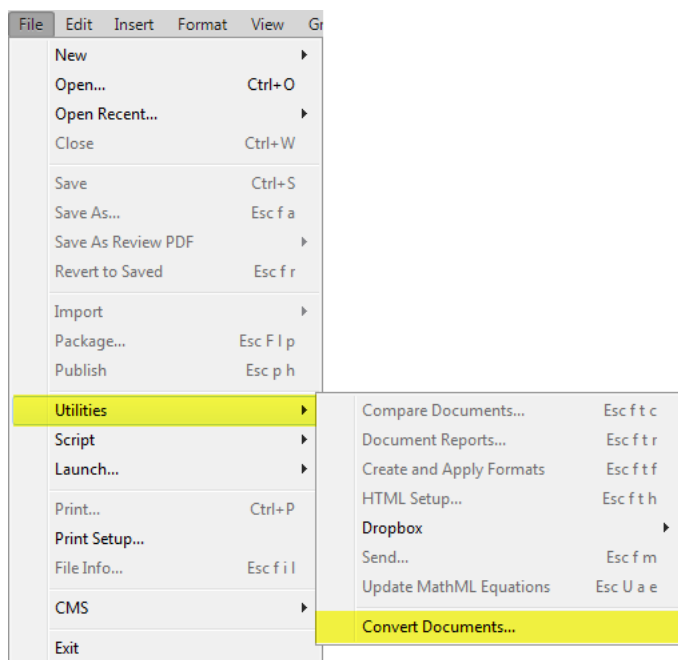
`C:\Users\<UserName>\AppData\Roaming\Adobe\FrameMaker\<VersionNumber>\startup`

folder on your hard drive, where <UserName> is your user name, and <VersionNumber> is the number of the FrameMaker version that you are using.

NOTE: If the **startup** folder does not exist in the <VersionNumber> folder, create it.

Unzip and copy all of the ConvertDocs* files to the **startup** folder.

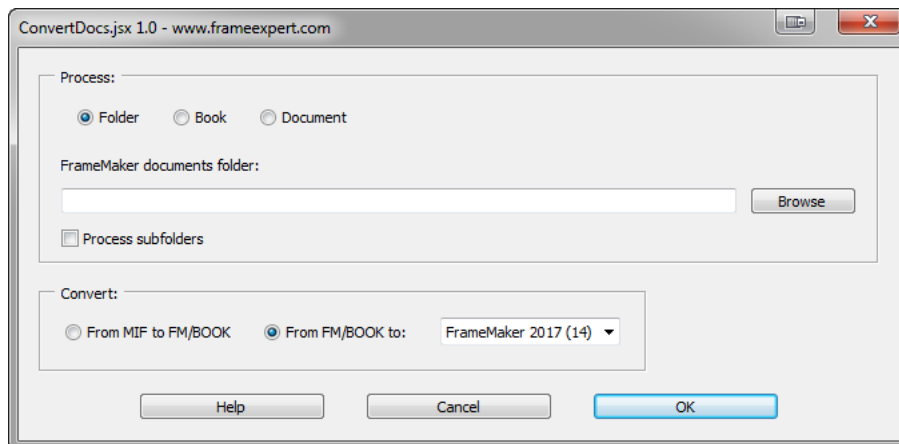
Restart FrameMaker and ConvertDocs will be ready to use. There will be a “Convert Documents” command in the **File > Utilities** submenu as shown in the following screenshot.



Using ConvertDocs

Please see [“Important Usage Warnings” on page 3](#) before using ConvertDocs.

To use ConvertDocs, choose **File > Utilities > Convert Documents** and the following dialog box will appear:

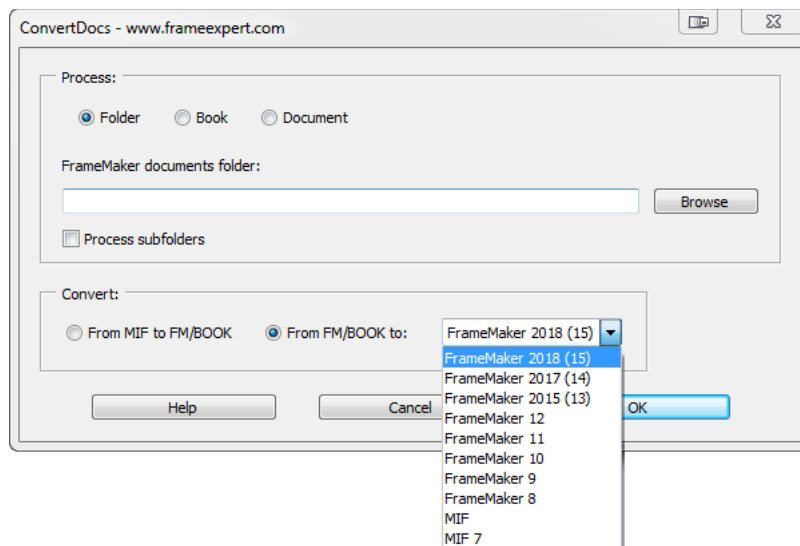


In the **Process** section, select the source of your input documents: **Folder**, **Book**, or **Document**. Click the **Browse** button to select the input folder, book, or document. If you choose **Book** or **Document** and have a book or document open in FrameMaker, the input field will default to the name of the active book or document.

If you choose **Folder**, you can check the **Process subfolders** checkbox to convert all relevant files in any subfolders below the folder you select.

WARNING: Be careful when choosing **Process subfolders** because ConvertDocs processes ALL of the subfolders at all levels below the one you select. This means that you may convert large numbers of files that you didn't intend to convert.

In the **Convert** section, select the type of conversion that you want to do. You can convert from MIF files to FrameMaker documents and books, or you can convert from FrameMaker documents and books to a number of different formats, as shown in the following screenshot:



NOTE: If your current FrameMaker version does not show in the dropdown list, see step 2 in [“Updating ConvertDocs” on page 4](#).

When you select the **Book** or **Document** radio buttons in the **Process** section, the **From MIF to FM/BOOK** radio button will be greyed out in the **Convert** section. This is because FrameMaker books rarely contain MIF files as components and you won’t normally convert a single document from MIF to FrameMaker.

When converting to MIF, ConvertDocs will convert to the MIF version that matches the current version of FrameMaker that you are using. For example, if you are using FrameMaker 2017, choosing **MIF** in the **From FM/Book** to dropdown menu is the same as choosing **MIF 2017** in the Save As dialog box’s dropdown menu.

When converting to MIF 7, ConvertDocs will not convert .book files. An ExtendScript bug causes FrameMaker to hang when converting a book to MIF 7 so ConvertDocs skips them. However, you can convert book files to MIF 7 using **File > Save As** and choosing the MIF 7 option.

NOTE: You should only use the MIF 7 option in the rare case when you need to share the files with someone using FrameMaker 7.2 or lower.

Review the [“Important Usage Warnings”](#) below before clicking OK.

Important Usage Warnings

- ConvertDocs *always overwrites* existing files.

For example, let’s say you get a set of MIF files from a translation vendor and you put them in the same folder as the original FrameMaker (.fm or .book) files. You use ConvertDocs to convert them **From MIF to FM/BOOK**; ConvertDocs will open each .mif file and save it as a FrameMaker document or book in the same folder with a .fm or .book extension. *Your existing .fm and .book files in that folder will be overwritten.*

- ConvertDocs *does not back up* any files that it processes.

For example, let's say you are using FrameMaker 2017 and your client is using FrameMaker 12 and you use ConvertDocs to save your files to FrameMaker 12. ConvertDocs will open each FrameMaker 2017 file and overwrite it in FrameMaker 12 format; *any features in the later version that are not available in the earlier version will be lost.*

WARNING: For these reasons, you should always back up your files before using ConvertDocs. Carmen Publishing Inc. is not responsible for any data loss that occurs while you are using ConvertDocs.

- ConvertDocs *cannot “upconvert” files higher the current version* of FrameMaker that you are using.

For example, let's say you are using FrameMaker 2015. You cannot convert your documents to FrameMaker 2017. You can only convert to versions at or lower than the current FrameMaker version you are using.

Updating ConvertDocs

The version of ConvertDocs that you are currently using is displayed in the upper-left corner of the ConvertDocs dialog box.

ConvertDocs has the possibility of two kinds of updates:

1. The entire program may be updated to provide new functionality. In this case, back up the new ConvertDocs.zip file before installing the updated script. Navigate to the

C:\Users\<<UserName>\AppData\Roaming\Adobe\Framemaker\<<VersionNumber>\startup

folder on your hard drive, where <UserName> is your user name, and <VersionNumber> is the number of the FrameMaker version that you are using. Remove all existing ConvertDocs* files from the startup folder. Unzip and copy all of the new ConvertDocs* files to the **startup** folder.

Restart FrameMaker and the updated ConvertDocs will be ready to use.

2. ConvertDocs will be partially updated when a new version of FrameMaker is released. The core features of ConvertDocs will not change, but filters will be added for the new version of FrameMaker.

Download the latest version data for ConvertDocs from

<http://www.frameexpert.com/ConvertDocs/ConvertDocsData.zip>

Backup the zip file. Unzip and copy ConvertDocs.jsxinc to the startup folder above, replacing the existing file. Restart FrameMaker and ConvertDocs will use the updated version information.

Uninstalling ConvertDocs

Navigate to the

C:\Users\<<UserName>\AppData\Roaming\Adobe\Framemaker\<<VersionNumber>\startup

folder on your hard drive, where <UserName> is your user name, and <VersionNumber> is the number of the FrameMaker version that you are using. Remove all of the ConvertDocs*

files from the **startup** folder. When you restart FrameMaker, ConvertDocs will be removed from FrameMaker.

Localizing the ConvertDocs Dialog Box

The ConvertDocs dialog box can be localized for other languages by editing the ConvertDocs.cfg file. This is an XML file in the startup folder that stores the labels for each dialog box control and stores the settings from the last use of the script. When editing the file, follow these important guidelines:

- Back up the original ConvertDocs.cfg file before editing it.
- Use a plain text editor or XML editor when editing the file.
- Only change the values of label attributes in the file. Modifying other content may damage the file and make the script unusable (see the yellow highlighting in the screenshot below).
- When editing label attributes, make sure you preserve the quotes around each attribute value (see the yellow highlighting in the screenshot below).
- You can add a line break in a message label by inserting `
` in the label where you want the line break (see the green highlighting on line 38 in the screenshot below).

```
1 <?xml version='1.0'?>
2 <dialog title="ConvertDocs" width="586">
3   <panel id="processGroup" label="Process:">
4     <radiobutton id="folder" value="true" label="Folder"/>
5     <radiobutton id="book" value="false" label="Book"/>
6     <radiobutton id="doc" value="false" label="Document"/>
7     <statictext id="folderLabel" label="FrameMaker documents folder:"/>
8     <statictext id="bookLabel" label="FrameMaker book:"/>
9     <statictext id="docLabel" label="FrameMaker document:"/>
10    <button id="browse" label="Browse"/>
11    <checkbox id="subfolders" value="false" label="Process subfolders"/>
12    <folderPath>C:\DATA\My Documents\ConvertDocs\Files</folderPath>
13  </panel>
14  <panel id="convertGroup" label="Convert:">
15    <radiobutton id="fromMif" value="false" label="From MIF to FM/BOOK"/>
16    <radiobutton id="toOther" value="true" label="From FM/BOOK to:"/>
17    <dropdownlist id="formatTypes" value="3"/>
18  </panel>
19  <group id="buttonGroup">
20    <button id="helpButton" label="Help"/>
21    <button id="cancelButton" label="Cancel"/>
22    <button id="okButton" label="OK"/>
23  </group>
24  <messages>
25    <message id="folderPrompt" label="Please select a folder of FrameMaker documents:"/>
26    <message id="bookPrompt" label="Please select a book:"/>
27    <message id="docPrompt" label="Please select a document:"/>
28    <message id="noTargetFolder" label="Target folder is required."/>
29    <message id="noTargetBook" label="Target book is required."/>
30    <message id="noTargetDoc" label="Target document is required."/>
31    <message id="targetFolderDoesNotExist" label="Target folder does not exist."/>
32    <message id="targetBookDoesNotExist" label="Target book does not exist."/>
33    <message id="targetDocDoesNotExist" label="Target document does not exist."/>
34    <message id="noFilesToConvert" label="There are no files to convert."/>
35    <message id="activeBookWarning" label="The active book will be closed after it is saved.&#xA;Do you want to continue?"/>
36  </messages>
37 </dialog>
```

- After editing the file, save the changes before choosing the Convert Documents command and you will see your changes in the dialog box. You can leave the XML file open as you edit the file, as long as you save it before displaying the dialog box.

- The XML file must be in the same folder as the script and have the same name as the script, except for the .cfg extension.
- If you damage the XML file so that the script no longer works, restore the original ConvertDocs.cfg file that you previously backed up.

For More Information

To purchase ConvertDocs and other useful ExtendScript scripts, see www.frameexpert.com or email rick@frameexpert.com. Carmen Publishing Inc. can also produce custom solutions for your particular automation needs.