

ManagelImagePaths 1.0

Introduction	1
Requirements	1
Installation	1
Collecting Image Data	3
Editing the Image Data	4
Updating the FrameMaker Data	5
For More Information	5

Introduction

Managing imported images can be a difficult task, especially with large document sets, and when folders are moved or renamed. In the FrameMaker interface, you can relink missing images when you open a document. This can be very time consuming when you have many documents with missing images.

ManagelImagePaths is a collection of FrameScript scripts that makes relinking missing images much more manageable. It does this by collecting and storing all of the imported image data in an Excel spreadsheet. This provides the following advantages:

- You can use Excel's tools to quickly analyze the image paths by sorting, rearranging columns, deleting unnecessary rows, etc.
- You can use Excel's find/replace tools to quickly change the image path data that you want. The image file and path are listed in separate columns in the spreadsheet, making it easier (and safer) to do find/replace just on the appropriate folders or file names.
- You can collect image data from a single document, book, or from a folder (and subfolders) of FrameMaker documents. This allows you to make find/replace operations on a large number of documents at once.
- After you update the spreadsheet data, a script reads all of the spreadsheet data, and updates the appropriate FrameMaker documents. Even with a large document set, the script will apply the updates in less than a minute.

Requirements

ManagelImagePaths requires Windows FrameMaker 7.2 or higher and FrameScript 4 or higher. You will also need Microsoft Excel 97 or higher installed on your computer.

Installation

ManagelImagePaths consists of the scripts listed below.

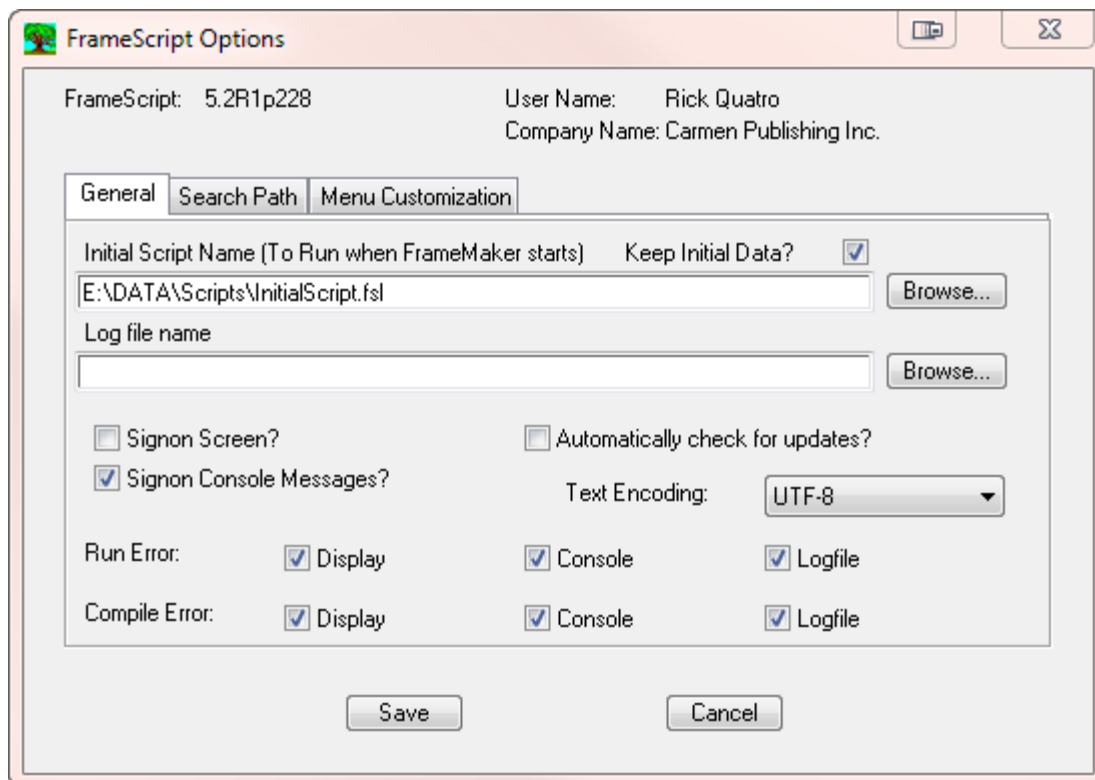
NOTE: Each script will have an .fsl or .fso extension on it, depending on whether you purchased the compiled (.fso) or uncompiled (.fsl) version of the scripts.

- GetImageData. This script prompts you for the document, book, or folder of documents and collects the data into a .csv (comma-separated) file, which will become your spreadsheet.

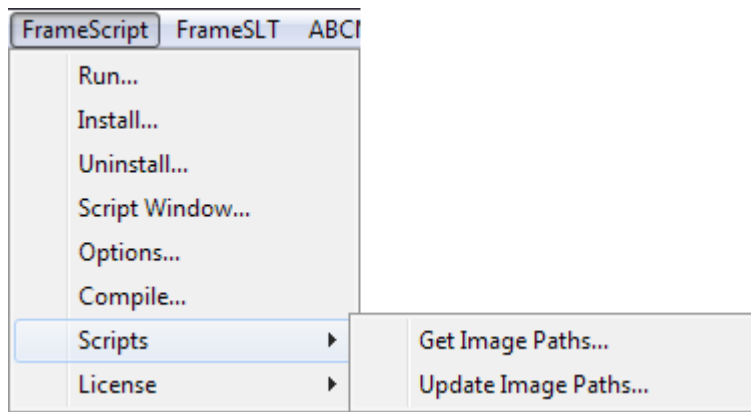
- **UndateImageData.** This script prompts you for an Excel spreadsheet (.xls or .xlsx), and updates the imported image paths in the FrameMaker documents as indicated in the spreadsheet.
- **GetDataDialog.** This is a utility script that manages and displays the GetImageData dialog box.
- **InitialScript.fsl.** This is used to install the other scripts automatically whenever you start FrameMaker.

To install the scripts, follow these steps:

1. Copy all of the scripts into a single folder on your hard drive or network volume.
2. Launch FrameMaker, and choose **FrameScript > Options.**

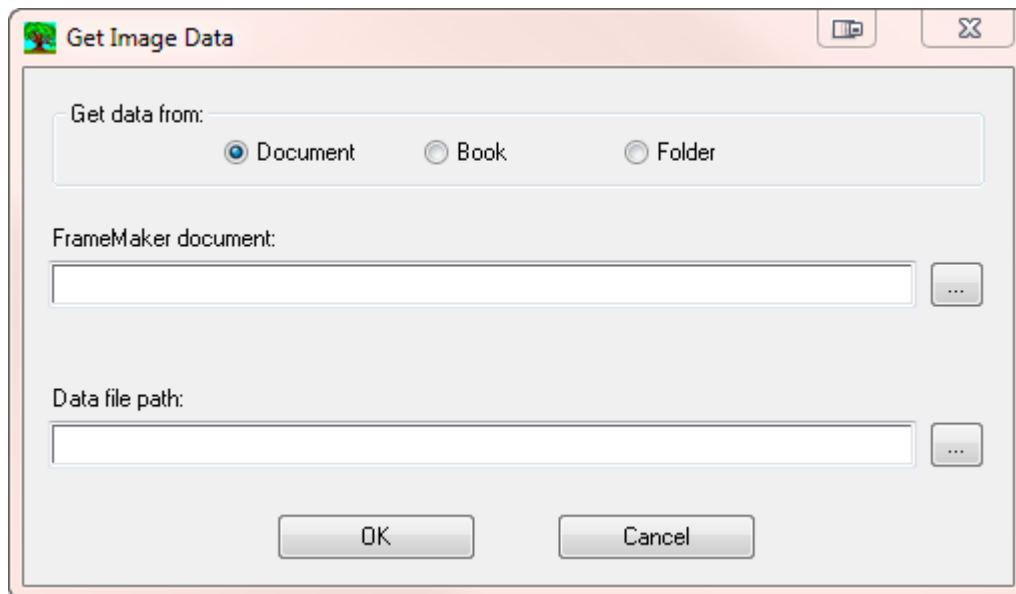


3. Click the Browse button next to the Initial Script Name field and navigate to the InitialScript.fsl file. After you select the file and click Select, you will see the path in the Initial Script Name field. Click Save to close the FrameScript Options dialog box.
4. Quit and restart FrameMaker. When you look at your **FrameScript > Scripts** submenu, you should see the **ManagelImagePaths** commands as in the screenshot below.



Collecting Image Data

To collect image data, choose **FrameScript > Scripts > Get Image Paths**. You will see the following dialog box.



Use the “Get data from” radio buttons to choose the data source: a Document, Book, or Folder. If you choose Folder, a Process Subfolders checkbox will appear. When this is checked, all folders below the top-level folder you choose will be processed.

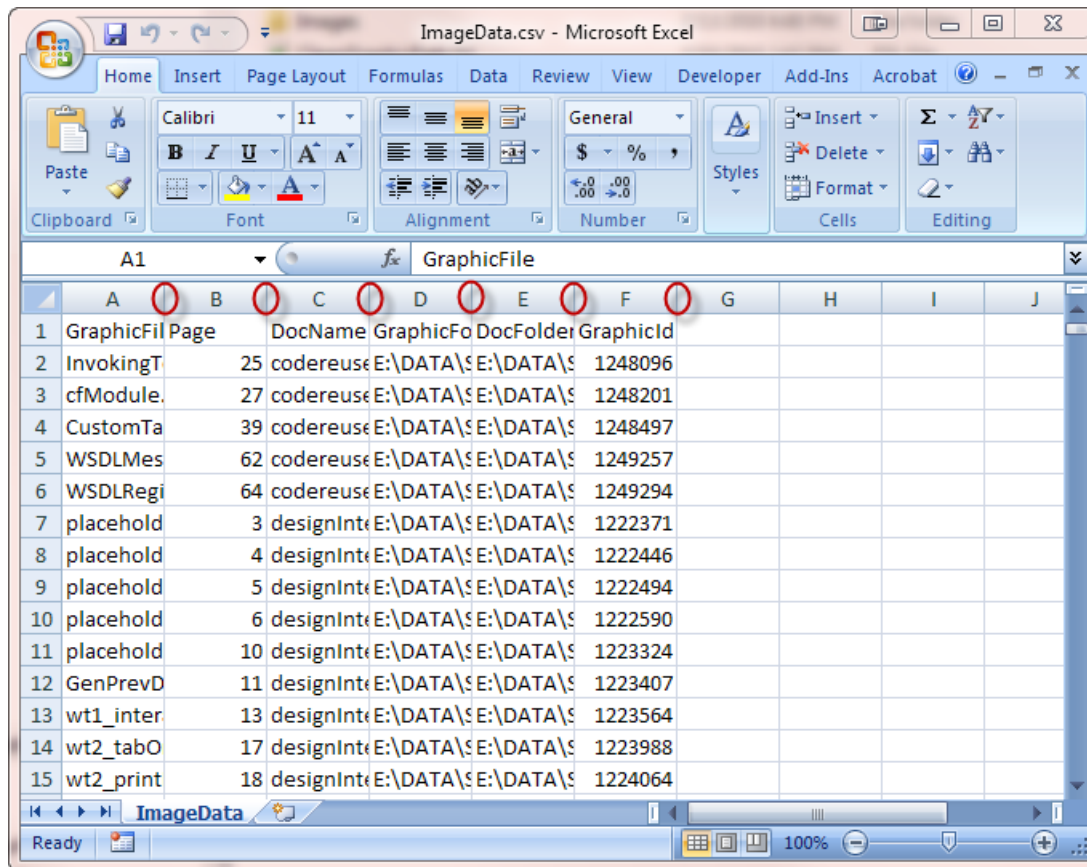
The first text field will have the path to the document, book, or folder, depending on which radio button is selected. Use the Browse button [...] next to the text field to select the desired document, book, or folder.

The “Data file path” text field is the path to the .csv file that will hold the image data that the script collects. Use the Browse button [...] next to the text field to navigate to the desired folder, and enter the file name. The data file should have a .csv extension; the script will automatically add it if you don’t enter it.

Click OK and the script will collect the image data into the specified .csv file.

Editing the Image Data

After collecting the desired data, you can open the .csv file in Excel. When you double-click on the .csv file, it should automatically open with Excel; if it doesn't, launch Excel first, and open the .csv file from Excel.



After opening the .csv file, save it as a native Excel spreadsheet. This will be an .xls file for Excel 97 or 2003, or an .xlsx file for Excel 2007. You can then resize the column widths to make the file easier to use.

NOTE: To quickly resize columns to the width of their content, double-click the separator line between the columns, indicated by the red ovals in the screenshot above.

Here are some important notes and tips about the Excel data file.

- You must save the file as an .xls or .xlsx file in order for the Update Image Paths command to work with it. The Update command will not work with a .csv file.
- You can rearrange the columns any way you want in the spreadsheet, as long as you don't delete any of the columns. Don't rename any of the column headings.
- You can sort the rows any way you like, and you can delete any rows that you don't need.
- Make sure you do not delete or alter the contents of the DocName, DocFolder, and GraphicId columns. The Update script uses these columns to find and edit the image paths that you have changed in the spreadsheet.

- There are two columns in the spreadsheet that can be edited: ImageFile and ImageFolder.

Updating the FrameMaker Data

After you modify the spreadsheet, make sure it is saved and closed. The Update script cannot read the spreadsheet if it is open in Excel. Choose **FrameScript > Scripts > Update Image Paths**. The script will prompt you for the path to the .xls or .xlsx file. Select the file and click Select. The script will read the data from the spreadsheet and update the FrameMaker imported image paths accordingly.

NOTE: If your spreadsheet refers to a large number of FrameMaker documents, the script may take a while to run.

For More Information

To purchase ManagelImagePaths and other useful scripts by Carmen Publishing Inc., see www.frameexpert.com or email rick@frameexpert.com.