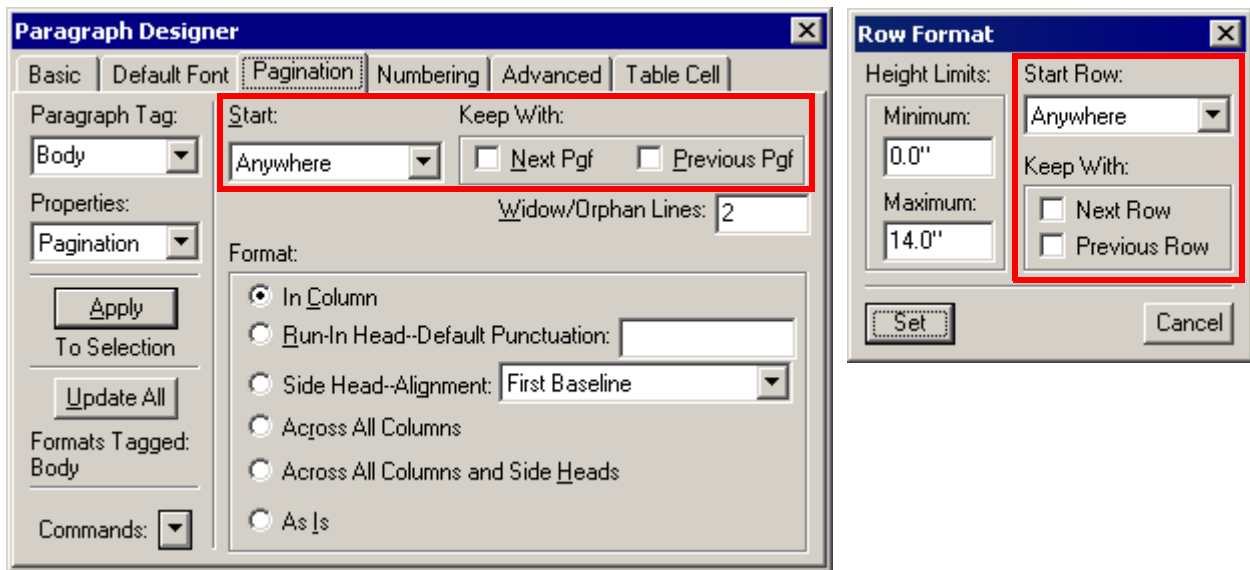


# PageBreaks by Carmen Publishing

Introduction . . . . .	1
System Requirements. . . . .	1
Installing PageBreaks . . . . .	1
Displaying the Page Breaks Palette . . . . .	2
Using PageBreaks . . . . .	2
For More Information . . . . .	3

## Introduction

PageBreaks is a simple plugin for adding *Start* (page break) and *Keep With* settings to paragraphs and table rows. PageBreaks controls the *Start* settings and the *Keep With* settings of the selected paragraph or table row.



PageBreaks uses a simple, context-sensitive palette to change the settings. See "Using PageBreaks" on page 2 for a description of each button.

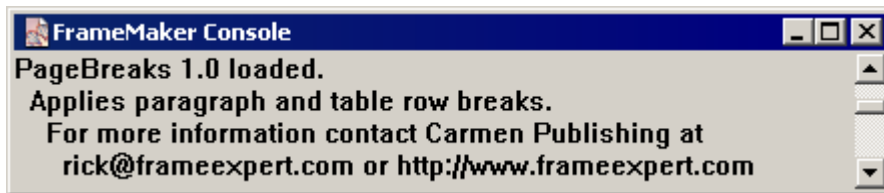


## System Requirements

PageBreaks works with Windows FrameMaker and FrameMaker+SGML 5.5.6 or higher.

## Installing PageBreaks

Create a folder called PageBreaks inside the FmInit/Plugins folder inside of your FrameMaker and FrameMaker+SGML folder. Copy the files **PageBreaks.dll**, **PageBreaks**, **PageBreaks.hlp**, and **PageBreaks.cnt** to the PageBreaks folder. Restart FrameMaker. If PageBreaks is loaded correctly, you will see a message written to the Console window.



## Displaying the Page Breaks Palette

Choose **View > Open Page Breaks Palette** to display the Page Breaks palette. If you get a message saying the the palette can't be found, make sure that **PageBreaks** is in the same folder as **PageBreaks.dll**.

## Using PageBreaks

Put your cursor in the paragraph or table row that you want to change and click the appropriate button on the palette. The palette is context-sensitive; when your cursor is in a paragraph outside of a table, the buttons will affect the pagination settings of the current paragraph. If your cursor is in a table cell paragraph, or if one or more table cells are selected, the buttons will affect the table row pagination of the selected rows.

A description of each button is below. Each screenshot shows the setting in the Paragraph Designer; they are similar to the corresponding settings in the Row Format dialog box.

A	Sets the paragraph or table row Start to Anywhere	
C	Sets the paragraph or table row Start to Top Of Column	
P	Sets the paragraph or table row Start to Top of Page	
TL	Sets the paragraph or table row Start to Top of Left Page	
TR	Sets the paragraph or table row Start to Top of Right Page	
KN	Changes the paragraph or table row's Keep With Next Pgf setting. This button is a toggle.	
KP	Changes the paragraph or table row's Keep With Previous Pgf setting. This button is a toggle.	
REMOVE	Removes all Start and Keep With overrides from the current paragraph or table row. Any other paragraph or row overrides will be preserved.	

---

? Displays a menu with About and Help commands. Choose About to display a dialog box with PageBreaks version and copyright information. Choose Help to see PageBreaks help in WinHelp format.

---

### **For More Information**

To purchase PageBreak or other useful plugins and FrameScript scripts, see [www.frameexpert.com](http://www.frameexpert.com) or email [rick@frameexpert.com](mailto:rick@frameexpert.com).